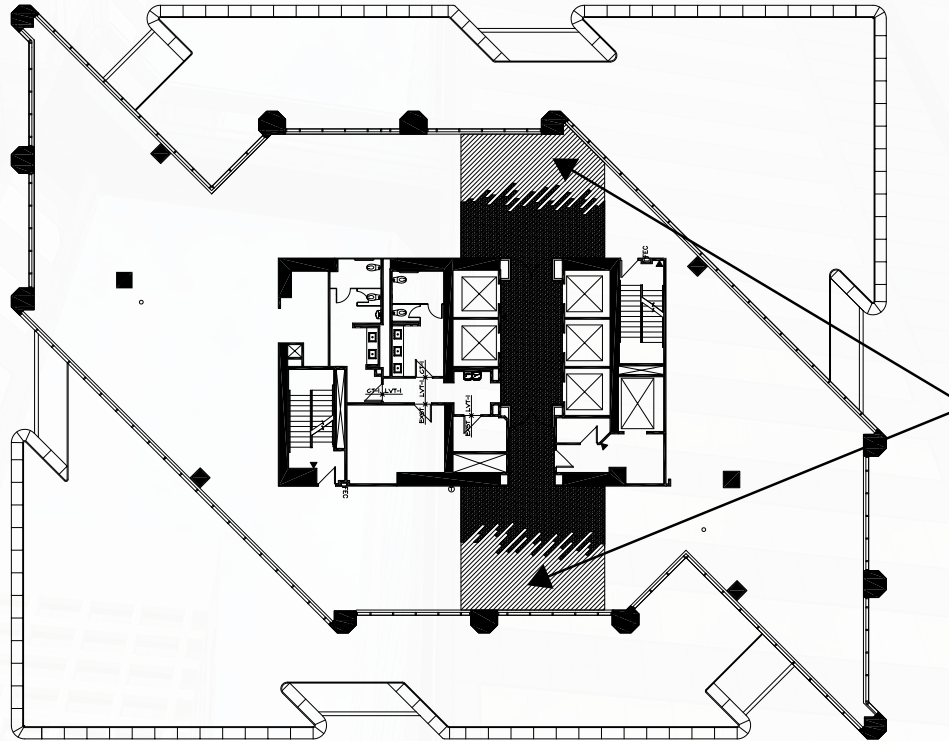
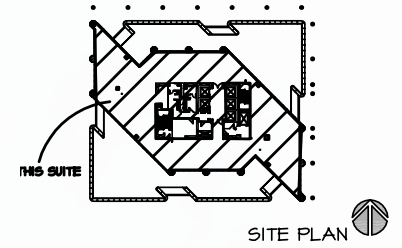




RENAISSANCESQUARE

40 NORTH CENTRAL AVENUE | SUITE 2800 - 9,175 SF



FLOORING CONCEPT

R. CRAIG COPPOLA
PRINCIPAL
602.954.3762
ccoppola@leearizona.com

BILL BLAKE
PRINCIPAL
602.954.3761
bblake@leearizona.com

ANDREW CHENEY
PRINCIPAL
602.954.3769
acheney@leearizona.com

COLTON TRAUTER
PRINCIPAL
602.474.9503
ctrauter@leearizona.com

GREGG KAFKA
ASSOCIATE
602.954.3777
gkafka@leearizona.com

LEE & ASSOCIATES
COMMERCIAL REAL ESTATE SERVICES