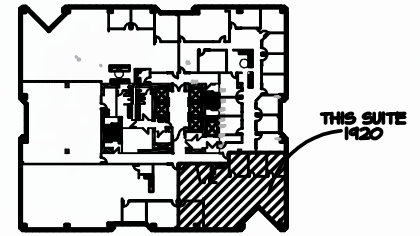




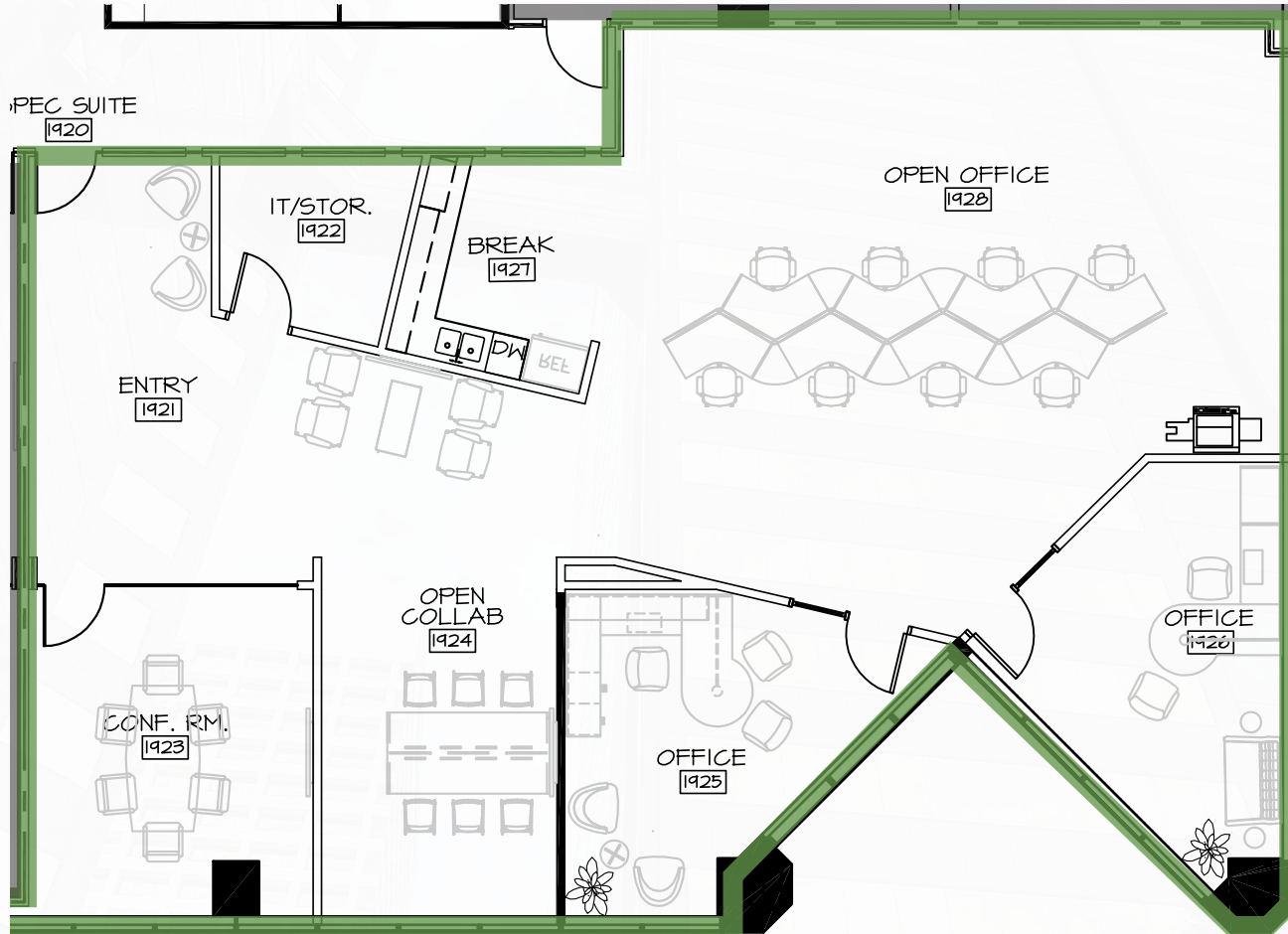
RENAISSANCESQUARE

40 NORTH CENTRAL AVENUE | SUITE 1920 - 3,228 SF



THIS SUITE
1920

SITE PLAN 



R. CRAIG COPPOLA
PRINCIPAL
602.954.3762
ccoppola@leearizona.com

BILL BLAKE
PRINCIPAL
602.954.3761
bblake@leearizona.com

ANDREW CHENEY
PRINCIPAL
602.954.3769
acheney@leearizona.com

COLTON TRAUTER
PRINCIPAL
602.474.9503
ctrauter@leearizona.com

GREGG KAFKA
ASSOCIATE
602.954.3777
gkafka@leearizona.com

 **LEE & ASSOCIATES**
COMMERCIAL REAL ESTATE SERVICES